

DRIVEWAYS | FENCES | WALLS

PATIO FORCE

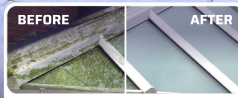
CONCENTRATE



✓ **DECKING**



✓ **DRIVEWAYS**



✓ **CONSERVATORIES**

KILLS AND CONTROLS GREEN GROWTH, ALGAE AND LICHENS

Storm Pro 5 kills and controls green growth, algae, mould and lichens on a multitude of surfaces including patios, walls, roof tiles, monuments, caravans, green houses, driveways, decking, conservatories, artificial grass, garden furniture, and composite building materials such as decking and fence panels for up to 9 months. Used for the preservation of masonry, composite materials or other construction materials other than wood by the control of microbiological and algal attack

5 Litres



KILLS AND CONTROLS GREEN GROWTH, ALGAE & LICHENS



ROOF TILES | DECKING | PAVING | CONSERVATORIES

✓ **LONG LASTING PROTECTION**

✓ **EASY-TO-USE**

✓ **NON-STAINING**

CHOOSE PATIO FORCE FOR YOUR GARDEN & HOME

Patio Force is the easy way to kill and control all types of green growth including algae, lichen and mould on all types of hard surfaces. No need for pressure washing, scrubbing or washing off. Contains biodegradable ingredients and does not contain any bleach or acid.



HOW TO USE PATIO FORCE

1. DO NOT APPLY if rain is expected within 12 hours
2. DO NOT APPLY if the temperature is below 5°C
3. Remove leaves, moss, litter and other debris from the affected area
4. Remove any large mould or algae growth with a stiff brush
5. Dilute Storm Pro 5 using the recommended dilution guide:
6. Apply to surface for best results. Application method: TRIGGER SPRAY, SPRAY, WATERING CAN, BATTERY OPERATED SPRAYER, LANCE SPRAYER
7. Ensure Storm Pro 5 is mixed well before use
8. Store container in an upright position when not in use

DILUTION GUIDE

	PATIO FORCE	Water	Area
Normal Coverage	300ml	1 Litre	3.3m ²
Light Coverage	150ml	1 Litre	6.6m ²

- ✓ **CLEANS UP TO 220sqm**
- ✓ **UP TO 9 MONTHS PROTECTION**
- ✓ **NO SCRUBBING REQUIRED**

Mix the product in a watering can or container using the recommended dilution rates. Cover the whole of the area being treated and leave to dry. Within a week the product will start working. In case of heavily infested areas, repeat the treatment as required.

PRECAUTIONS: This material and its container must be disposed of in a safe way. Do not contaminate foodstuffs, eating utensils or food contact surfaces. Keep away from treated surfaces until dry. Wash hands and exposed skin before meals and after use. Keep in a safe place. To avoid risks to human or animal health, or the environment, comply with the instructions for use.

Type of formulation: SL – Soluble concentrate. Use biocides safely and sustainably. This product should be used in accordance with the product label. Dispose of contents/ container in accordance with local regulations. Poisons information: For information or to report a poisoning incident contact The National Poisons Information centre (01 8092166)

STATUTORY CONDITIONS OF APPROVAL RELATING TO USE:
FOR USE ONLY AS SURFACE BIOCIDES. DILUTE THE PRODUCT FROM 30% TO 15%, DEPENDING ON THE INFESTATION. 1 LITRE PER 3 SQUARE METERS FOR NORMAL INFESTATION. 1 LITRE PER 6.66 SQUARE METERS FOR LIGHT INFESTATION. Users must comply in full with all their legal responsibilities under the Control of Pesticide Regulations 1986 (as amended) and the Control of Pesticides Regulations (Northern Ireland) 1987 (as amended) including complying with all conditions of Approval. READ ALL PRECAUTIONS BEFORE USE.
HSE No 10567-GB 10567-NI PCS No 99639

UFI- JHAJ-TNSQ-1400-M060



Manufactured in the UK.
Marketed by Lodi UK Limited,
3rd Avenue, Perspott Trading
Estate, Kingswinford, West
Midlands DY6 7FD
Tel: +44(0)1384 404242
sales@lodi-uk.com
www.lodi-uk.com

LODIGROUP France Head Office
Parc d'Activité des Quatre Routes
33300 Grand Espoir, FRANCE
www.lodi-group.fr
Batch Number and
Expiry Date
See container

5 Litres

STORM PRO 5 Alkyl(C12-16) dimethylbenzyl ammonium chloride 4,99% w/w

DANGER:

Causes skin irritation. Causes serious eye damage. Very toxic to aquatic life with long lasting effects. Do not breathe vapours. Avoid release to the environment. Wear protective gloves/protective clothing/eye protection/face protection. IF SWALLOWED: Rinse mouth. Do NOT induce vomiting. IF ON SKIN (or hair): Take off immediately all contaminated clothing. Rinse skin with water (or shower). IF INHALED: Remove person to fresh air and keep comfortable for breathing. IF IN EYES: Rinse cautiously with water for several minutes.

Remove contact lenses, if present and easy to do. Continue rinsing. Immediately call a POISON CENTER/doctor/ Collect spillage... Dispose of contents/ container according to the regulation.

